



STOCK LINK WHITE PAPER

Stock Link is a groundbreaking investment platform that bridges the gap between the cryptocurrency and stock markets. By converting tokens into shares, investors can earn dividends based on their token holdings and the profits generated from investment campaigns. This innovative C2S (Crypto to Stock) approach aims to minimize risks and maximize returns for investors while fostering positive interactions between the two markets. The White Paper provides a comprehensive analysis of Stock Link's potential, making it a compelling investment opportunity worth exploring.

www.stocklink.org



Stock Link Project

C2S - Crypto to Stock

SLT Token



Legal Disclaimer



This Summary (White Paper) is not a call for investment and does not promise the development of Stock Link. Instead, the White Paper is where we explain the formation, construction plan, and future development of Stock Link.

We want to emphasize that the White Paper does not guarantee the future value of Stock Link. It is a summary of the Stock Link construction plan, which may change based on the influence of external factors, market fluctuations, and other factors.

We encourage everyone to read this White Paper as a source of information to better understand the Stock Link project but should not consider it a basis or guide for investment decisions. Investment decisions should be based on thorough research and advice from financial experts.



Abstract

This White Paper presents a completely new concept of investment approach and the relationship between the cryptocurrency market and the stock market, called C2S - Crypto to Stock.

We will turn tokens into shares, and dividends will be divided based on the number of tokens that investors hold from the profits of investment campaigns.

With C2S, we introduce a breakthrough investment method, facilitating positive interaction between these two markets, helping to minimize risks and optimize benefits for investors.

In this White Paper, we delve into a detailed analysis of the definition and meaning of C2S, while clarifying its formation and sustainable development potential.

In particular, we focus on assessing the profit potential of Stock Link, which we believe will attract the interest of many investors at the present time and present the most detailed analysis to support everyone's investment decisions.

S

Challenges

- One of the biggest challenges facing the cryptocurrency market is extreme price volatility, mainly due to over-reliance on Bitcoin. As the first and largest cryptocurrency by market capitalization, Bitcoin is often seen as the "bellwether" for the entire market. The rise or fall of Bitcoin often creates a domino effect, affecting the value of most other cryptocurrencies (altcoins). This correlation, while it can bring quick profits during times of price increases, also means great risk when Bitcoin falls in price.
- This dependence not only causes unpredictable fluctuations but also limits the independent development of altcoin projects. Their value is often overshadowed by Bitcoin's "shadow," making it more difficult to attract investment capital and build trust from the community. Moreover, the concentration of power in Bitcoin also increases the risk of market manipulation and creates unnecessary instability.
- For the cryptocurrency market to truly develop sustainably, it is necessary to reduce dependence on Bitcoin and create a diverse environment where altcoin projects can develop independently based on their own value and potential.

S



- The price fluctuation charts of Bitcoin and ETH are similar, demonstrating Bitcoin's significant influence on a large portion of the crypto market.

**/ Source: CoinMarketCap*

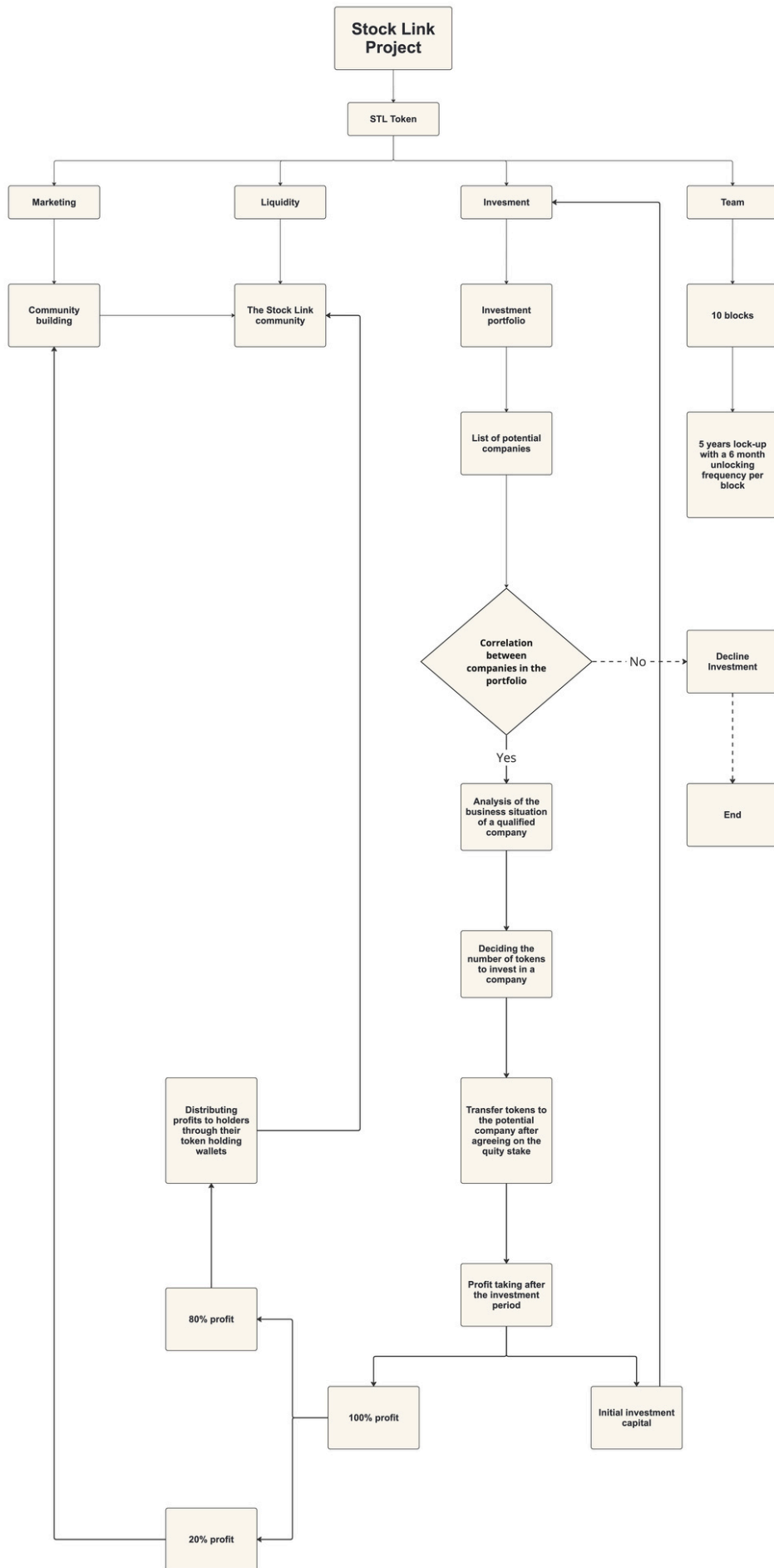


Solutions

- Stock Link's Crypto to Stock (C2S) model is a revolutionary investment solution that directly addresses the Bitcoin dependency problem that has caused much volatility and risk to the cryptocurrency market. Instead of relying solely on token price fluctuations, C2S converts STL tokens into actual shares in potential companies. This not only diversifies the investment portfolio and reduces risk but also opens up opportunities to generate sustainable profits through sharing dividends from the profits of these companies.
- With C2S, investors are no longer passive in the face of unpredictable fluctuations in the crypto market. Instead, they become actual shareholders in businesses, participating in the growth and development of these companies. This brings stability and long-term growth potential to the portfolio, not just dependent on token price fluctuations.
- C2S also takes advantage of the 24/7 liquidity of the cryptocurrency market, making it easy for investors to buy, sell, and convert STL tokens into shares or vice versa at any time. This solves the liquidity problem often encountered in the traditional stock market, where trading only takes place during limited business hours.
- Furthermore, sharing dividends from the profits of investment companies gives investors a stable and passive income source. Instead of just waiting for the token price to increase, investors can benefit from the actual business activities of the companies, creating a steady and sustainable cash flow.

S

- In short, Stock Link's C2S is an advanced investment model that combines the advantages of both the cryptocurrency market and the stock market. By reducing risk, increasing liquidity, and creating a stable income source, C2S offers investors a comprehensive investment solution with high-profit potential.
- However, Stock Link does not underestimate the potential challenges in this journey. We are aware of the legal barriers that may arise when combining the cryptocurrency and stock markets, and we are committed to working closely with regulators to ensure full compliance with the laws.
- Convincing companies to accept investments in STL tokens is also a challenge, but we believe that with the growth potential and superior benefits that the C2S model brings, we will gradually build trust and cooperation with strategic partners.
- Investment risk is inevitable, but we have built a rigorous due diligence and risk management process based on the experience and expertise of our leading financial analysis team. We are committed to information transparency and sharing details about investments so that investors can make informed decisions.
- Although C2S helps reduce dependence on Bitcoin, we also anticipate fluctuations that may occur in the cryptocurrency market in general. Therefore, we always closely monitor the market and have preventive measures in place to protect the interests of investors.
- With careful preparation, a clear strategy, and a professional team, Stock Link is confident in overcoming these challenges and making the C2S model a reality, bringing sustainable value to investors and contributing to developing both the cryptocurrency and stock markets.





The C2S (Crypto to Stock) Model

A. Definition

- Crypto to Stock (C2S) is a unique investment model that merges the power of the cryptocurrency market with the stability of the stock market. In this model, the STL token is not merely a cryptocurrency but also represents actual ownership in the companies Stock Link invests in.
- Specifically, when investors purchase STL tokens, they not only acquire a digital asset but also indirectly become shareholders in Stock Link's investment portfolio. The value of the STL token is tied to the performance of these companies, and investors will benefit from the investments through dividends.

B. Operational Process

The C2S model operates through the following five-step process:

- Fundraising: Stock Link issues STL tokens through an Initial ICO to raise initial capital. This capital is used for marketing, community development, and initial project operating expenses.
- Building the Investment Portfolio: Stock Link utilizes 52.48% of the total STL token supply to invest in promising companies in target sectors, including energy, technology, healthcare, and food. These companies are carefully selected based on their growth potential and profitability.

S

- **Generating Profits:** The companies within Stock Link's portfolio operate and generate profits.
- **Profit Sharing:** Profits (after deducting the initial capital from revenue) from investments are shared with STL token holders in the form of dividends. The sharing ratio is 80% of the profits for investors, 10% for Stock Link's operations, and the remaining 10% for reinvestment.
- **Reinvestment:** A portion of the profits is reinvested in other companies to expand the investment portfolio and continue generating profits.

C. Strengths of C2S

The C2S model offers numerous advantages to both investors and the market:

- **Mitigates Volatility:** By linking STL tokens to the performance of real-world companies, the C2S model helps reduce the price volatility often seen in the cryptocurrency market, providing more stability for investors.
- **Generates Stable Income:** Sharing dividends from company profits gives investors a steady and passive income stream, independent of token price fluctuations.
- **Enhances Liquidity:** STL tokens are traded on decentralized exchanges (DEXs), ensuring high liquidity and allowing investors to easily buy and sell at any time.
- **Diversifies Portfolios:** C2S allows investors to access both the crypto and stock markets, enabling portfolio diversification and risk reduction.

S

- **Transparency and Professionalism:** Stock Link is committed to transparency in all operations, from selecting investment companies and reporting profits to distributing dividends. The experienced team at Stock Link ensures professionalism and efficiency in portfolio management.
- **Optimizes Profit:** The C2S model focuses on maximizing investor profits by selecting promising companies and reinvesting continuously.

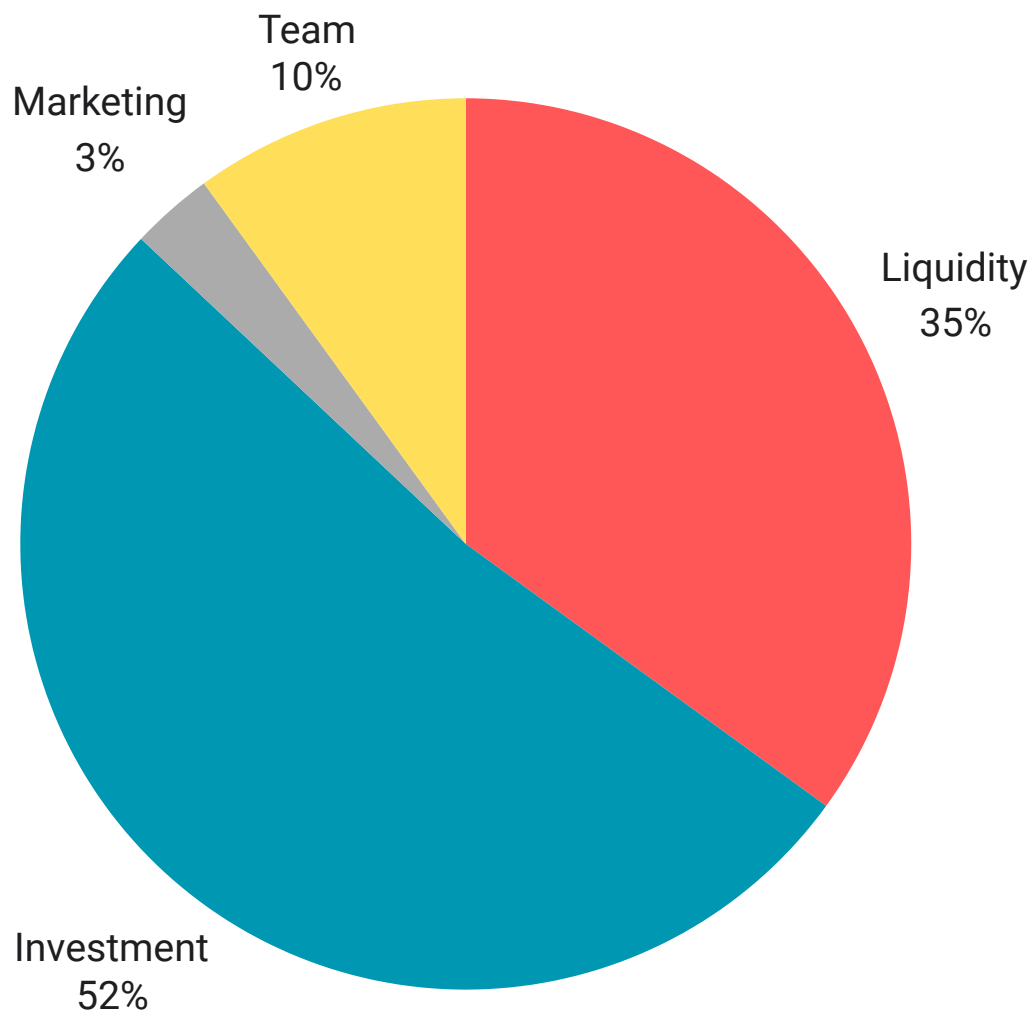


Tokenomics

A. Total Supply

- The total supply of STL tokens is 5,000,000,000 (5 billion).

B. Allocation





C. Token Allocation Breakdown

Group	Percentage	Description
Liquidity	35%	Provides liquidity for STL tokens on decentralized exchanges (DEXs), ensuring high liquidity and facilitating easy buying and selling of tokens for investors.
Investment	52%	The majority of STL tokens are allocated to the investment, demonstrating Stock Link's commitment to maximizing investor returns. These tokens will be used to invest in promising companies in the energy, technology, healthcare, and food sectors. Profits from these investments will be shared with investors as dividends, creating a stable and attractive income source.
Marketing	3%	Used for marketing activities and community development, including project promotion, branding, events, and incentive programs to attract users and investors.
Team	10%	Allocated to the project's development team and advisors. The team's tokens will be gradually unlocked to ensure their long-term commitment and alignment with the project's success. Divided into 10 portions, 1% will be unlocked every 6 months until the end of 5 years.



Profit Optimization and Transparency

Stock Link is dedicated to maximizing investor profits through:

- **Smart Investments:** Meticulously selecting potential companies with high profitability in the target sectors.
- **Professional Portfolio Management:** Stock Link's experienced team of experts will efficiently manage the investment portfolio to ensure optimal returns.
- **Continuous Reinvestment:** A portion of the profits will be reinvested in new companies to continue generating profits and achieve sustainable growth.
- **Cost Efficiency:** Stock Link optimizes operating costs by focusing on core activities and minimizing investments in non-essential items.

A. Transparency and Fairness

- Stock Link is committed to transparency in all operations, from selecting investment companies and reporting profits to distributing dividends. All project-related information is publicly available and regularly updated so investors can track and evaluate investment performance.



B. Investment Criteria

Stock Link seeks companies that meet the following criteria:

- **Growth Potential:** Companies with high growth potential in the future, based on factors such as target market, competitive advantage, scalability, and management team.
- **Profitability:** Companies with the ability to generate stable and sustainable profits, with a proven business model and positive cash flow.
- **Management Team:** Companies with experienced management teams possessing vision and leadership skills, with a track record of operating and growing businesses.
- **Technology (for tech companies):** Companies with unique and innovative technology that has the potential for broad application and creates added value for society.
- **Social Impact:** Stock Link considers corporate social responsibility factors, including environmental impact, community impact, and other stakeholders.
- **Other Factors:** In addition to the above criteria, Stock Link may consider other factors such as company valuation, exit potential, legal risks, and industry-specific factors.



C. Investment Decision Process

Stock Link follows a rigorous investment decision process:

- **Market Research:** Stock Link conducts market research to identify potential sectors and prominent companies within each sector.
- **Fundamental Analysis:** Stock Link performs fundamental analysis of potential companies, including financial assessment, business model evaluation, competitive advantage analysis, and growth potential assessment.
- **Risk Assessment:** Stock Link evaluates the risks associated with each company, including market risk, operational risk, legal risk, and other specific risks.
- **Due Diligence and Approval:** Potential investments are presented and discussed within the Stock Link team. The final investment decision is made based on team consensus and established evaluation criteria.

D. Information Transparency

- Stock Link is committed to publicly disclosing information about its investment portfolio, including company names, sectors, investment amounts, and ownership percentages.
- This information will be regularly updated on the project's website and official information channels.



E. Risk Management

Stock Link employs a comprehensive risk management strategy to safeguard investor interests:

- **Diversification:** Investing in a diverse range of companies across different sectors mitigates concentration risk.
- **Strategic Allocation:** Stock Link allocates capital judiciously, avoiding overexposure to any single company or sector.
- **Active Monitoring:** The team continuously monitors the performance of portfolio companies to identify and address potential risks promptly.
- **Flexible Exit Strategy:** Stock Link maintains a flexible exit strategy, prepared to divest from companies that no longer demonstrate growth potential or exhibit high-risk indicators.



F. Investment Strategy

Stock Link focuses on high-potential companies in the following sectors, where we can maintain proactive control over management and profitability:

- Energy: Companies developing renewable and clean energy solutions, contributing to sustainable development.
- Technology: Companies with innovative products or services and high growth potential.
- Healthcare: Companies providing advanced healthcare solutions to improve the quality of life.
- Food: Companies producing clean and sustainable food to meet the increasing demand for food safety.
- Stock Link will not invest in crypto projects. We recognize the crypto market's volatility and instability, which do not align with our goal of delivering sustainable returns to investors.



Conclusion

Stock Link (STL) is not just a cryptocurrency project; it is a revolution in the investment field. With the unique Crypto to Stock (C2S) model, Stock Link breaks down the barriers between two traditional markets, opening the door to a new era of investment - an era of combination, diversification, and profit optimization.

We not only provide a solution to the existing problems of the cryptocurrency and stock markets but also create a completely new investment ecosystem where investors can maximize the potential of both markets. By combining the flexibility, transparency, and growth potential of the cryptocurrency market with the stability, security, and sustainable profitability of the stock market, Stock Link offers an unprecedented investment opportunity.

We believe that C2S will be the key to opening the door to prosperity for investors, while contributing to the sustainable development of both markets. With an experienced team of experts, intelligent investment strategies, and an absolute commitment to transparency, Stock Link is confident in leading the new investment trend and bringing long-term value to the community.